

'12

TOTALStone®

Natural Inspiration | Inspiración natural

TOTAL Panel System[®] S.A. a brand with the usual standard.

We have changed our brand structure keeping the usual philosophy:
a commitment with innovation and quality.

Brands like **oldSTONES**[®] give way to new generation products

TOTALStone[®]

TOTALDesign[®]

TOTALWood[®]

TOTAL Panel System[®] S.A. una marca con la categoría de siempre.

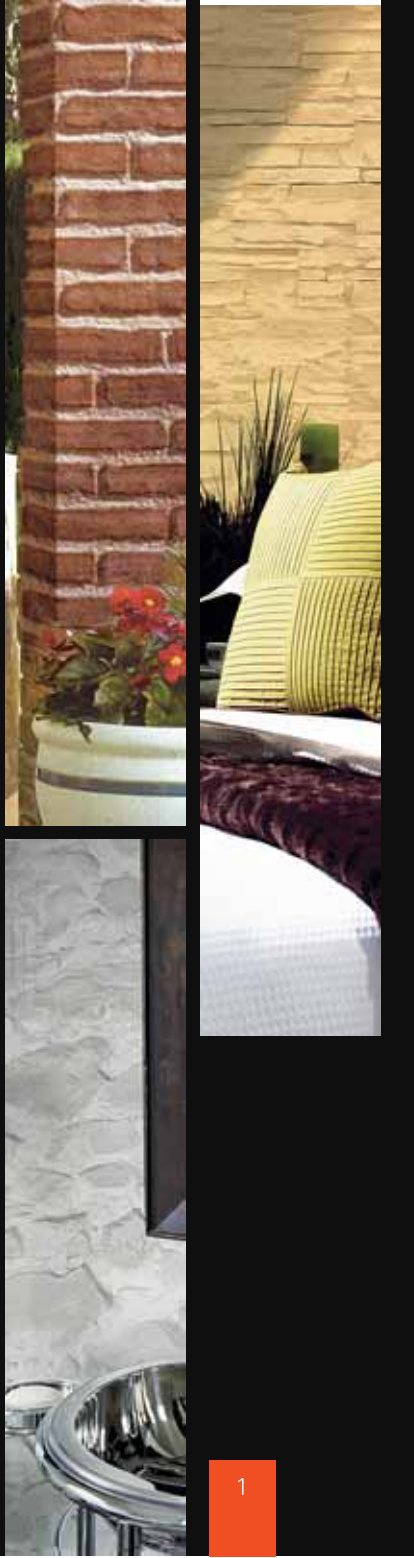
Cambiamos nuestra estructura de marca con la filosofía de siempre:
la apuesta por la innovación y la calidad.

Marcas como **oldSTONES**[®] dan paso a nuevas generaciones de productos

TOTALStone[®]

TOTALDesign[®]

TOTALWood[®]





INDEX | ÍNDICE

04 INTRODUCTION | INTRODUCCIÓN

06 PANELS | PANELES

36 VAULTS | BÓVEDAS

44 ARCHES | ARCOS

50 ANGLES & PILLARS | ÁNGULOS Y PILARES

56 CHARACTERISTICS & TECHNICAL DATA | CARACTERÍSTICAS Y DATOS TÉCNICOS

57 INSTALLATION | INSTALACIÓN

TOTALStone®, walls that are **NOT** made of stone.

TOTALStone® faithfully reproduces texture and colour of usual spaces; in stone, brick, slate...

Thus, surfaces achieve a leading role in usual architectonic structures, filtered through actual decorating style.

An interpretation, where the elegance, design and quality, show all its expression.

We strongly believe in style and distinction both in open spaces and in those more difficult to cover.

We cover all of them, every one, for you and your comfort. Our last generation technology offers practical and easy-to-use products, visually perfect and easy to install, to create outstanding environments in unthinkable places.

We design panels, vaults, arches and angles that provide a personal and distinguished touch in traditional or innovative spaces.

TOTALStone®, los muros que **NO** son de piedra.

TOTALStone® reproduce con una fidelidad milimétrica la textura y el color de entornos de siempre como la piedra, el ladrillo, la pizarra...

Así, convertimos estas superficies en protagonistas de las estructuras arquitectónicas de siempre, filtradas por las tendencias decorativas de hoy. Una interpretación donde la elegancia, el diseño y la calidad se muestran en toda su expresión.

Creemos en el estilo y la distinción tanto en los espacios abiertos como en aquellos más difíciles de cubrir. Todos, absolutamente todos, los vestimos para usted y para su comodidad. Nuestra tecnología de última generación nos ofrece los productos más prácticos, manejables, fácilmente instalables y visualmente perfectos para crear ambientes sorprendentes en lugares impensables.


Diseñamos paneles, bóvedas, arcos y ángulos que aportan un toque de personalidad y distinción en los ambientes de entornos tradicionales o de carácter vanguardista e innovador.



M099

Ochre Laja Stone Panel · Panel Piedra Laja Ocre

5



"...Originality consists of going back to the origins" Antoni Gaudí

TOTALStone®

PANELS | PANELES

Spaces covered with our panels take on new life and give a feeling of welcoming ambience.

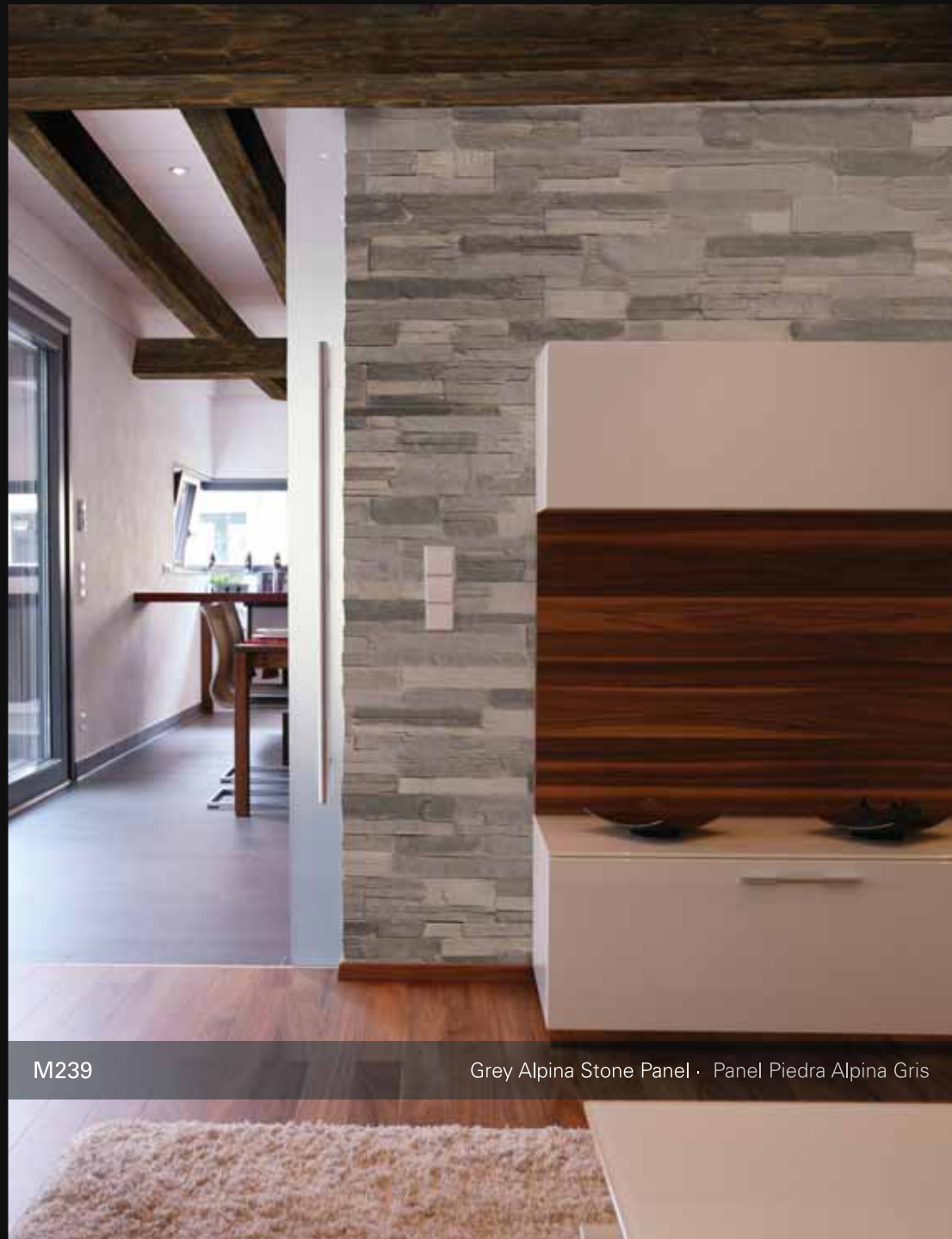
Los espacios recubiertos por nuestros paneles cobran una nueva vida y la sensación de un entorno más acogedor.

"... la originalidad consiste en volver al origen" Antoni Gaudí



M242

White Cobblestone Panel · Panel Adoquín Blanco



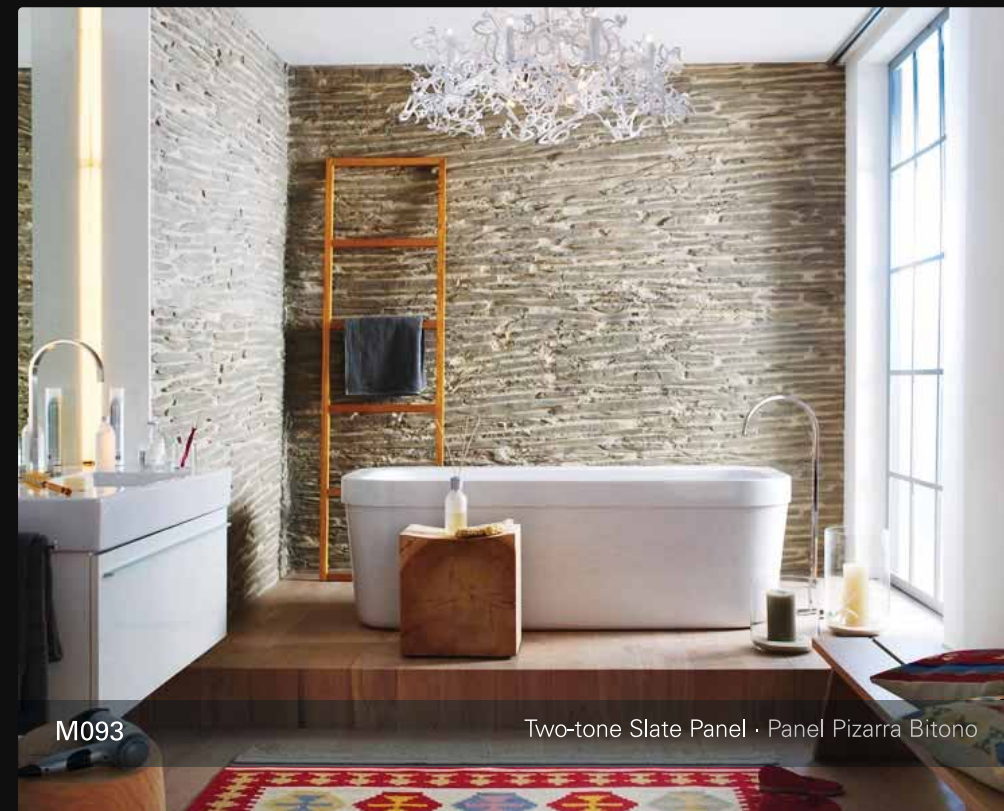
M239

Grey Alpina Stone Panel · Panel Piedra Alpina Gris



M117

Clear Limestone Panel · Panel Piedra Caliza Clara



M093

Two-tone Slate Panel · Panel Pizarra Bitono



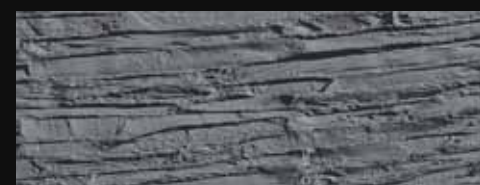
M089
Ochre Slate Panel
Panel Pizarra Ocre



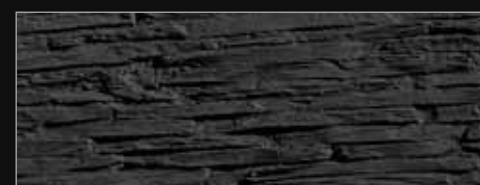
M091
Grey Slate Panel
Panel Pizarra Gris



M093
Two-tone Slate Panel
Panel Pizarra Bitono



M095
Black Forge Slate Panel
Panel Pizarra Negra Forja



M095.1
Matte Black Slate Panel
Panel Pizarra Negra Mate



M273
White Slate Panel
Panel Pizarra Blanca



M272

Scrubbed White Brick Panel · Panel Ladrillo Blanco Restregado



M005
Alhambra Brick Panel
Panel Ladrillo Alhambra



M006
Ochre Alhambra Brick Panel
Panel Ladrillo Alhambra Ocre



M007
Bi-colour Brick Panel
Panel Ladrillo Bicolor



M009
Multi-colour Brick Panel
Panel Ladrillo Multicolor



M272.1
White Alhambra Brick Panel
Panel Ladrillo Alhambra Blanco



M272
Scrubbed White Brick Panel
Panel Ladrillo Blanco Restregado



M015

Ochre New Brick Panel · Panel Ladrillo Nuevo Ocre



M269

London Brick Panel · Panel Ladrillo London



M014
Red New Brick Panel
Panel Ladrillo Nuevo Rojo



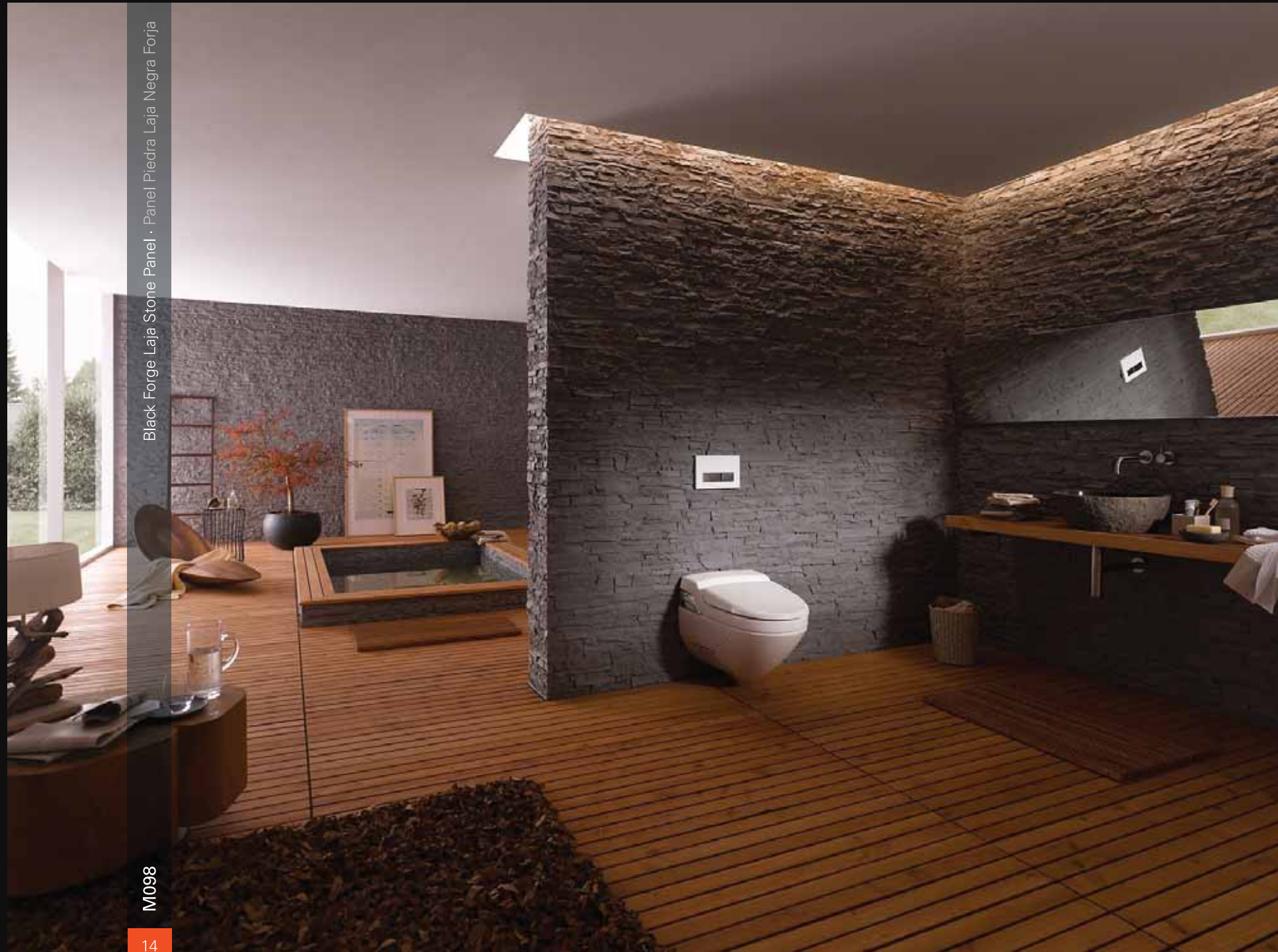
M015
Ochre New Brick Panel
Panel Ladrillo Nuevo Ocre



M270
White New Brick Panel
Panel Ladrillo Nuevo Blanco



M269
London Brick Panel
Panel Ladrillo London



M098

Black Forge Laja Stone Panel · Panel Piedra Laja Negra Forja



M097
Grey Laja Stone Panel
Panel Piedra Laja Gris



M098
Black Forge Laja Stone Panel
Panel Piedra Laja Negra Forja



M098.1
Matte Black Laja Stone Panel
Panel Piedra Laja Negra Mate



M098 V
Clear Laja Stone Panel
Panel Piedra Laja Clara



M099
Ochre Laja Stone Panel
Panel Piedra Laja Ocre



M235
White Laja Stone Panel
Panel Piedra Laja Blanca



M076 Special Ginestar Stone Panel · Panel Piedra Ginestar Especial



M074 Ochre Ginestar Stone Panel · Panel Piedra Ginestar Ocre



M070 Grey Ginestar Stone Panel
Panel Piedra Ginestar Gris



M072 Red Clay Ginestar Stone Panel
Panel Piedra Ginestar Rojo Arcilla



M074 Ochre Ginestar Stone Panel
Panel Piedra Ginestar Ocre



M076 Special Ginestar Stone Panel
Panel Piedra Ginestar Especial



M051

Grey Dry Stone Panel · Panel Piedra Seca Gris



M051

Grey Dry Stone Panel
Panel Piedra Seca Gris



M053

Ochre Dry Stone Panel
Panel Piedra Seca Ocre



M054

Brown Dry Stone Panel
Panel Piedra Seca Marrón



M055

Blue Dry Stone Panel
Panel Piedra Seca Azul



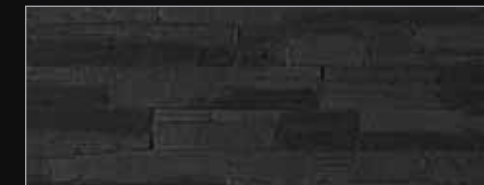
M056

Swap Dry Stone Panel
Panel Piedra Seca Invertida



M236

Multicolor Alpina Stone Panel · Panel Piedra Alpina Multicolor



M233

Black Alpina Stone Panel
Panel Piedra Alpina Negra



M234

White Alpina Stone Panel
Panel Piedra Alpina Blanca



M236

Multicolor Alpina Stone Panel
Panel Piedra Alpina Multicolor



M237

Ochre Alpina Stone Panel
Panel Piedra Alpina Ocre



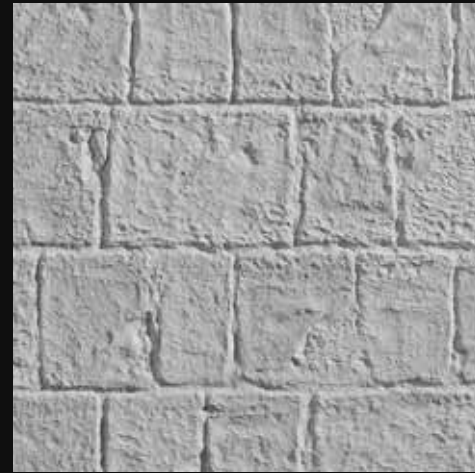
M239

Grey Alpina Stone Panel
Panel Piedra Alpina Gris



Ochre Cut Stone Panel · Panel Piedra Tallada Ocre

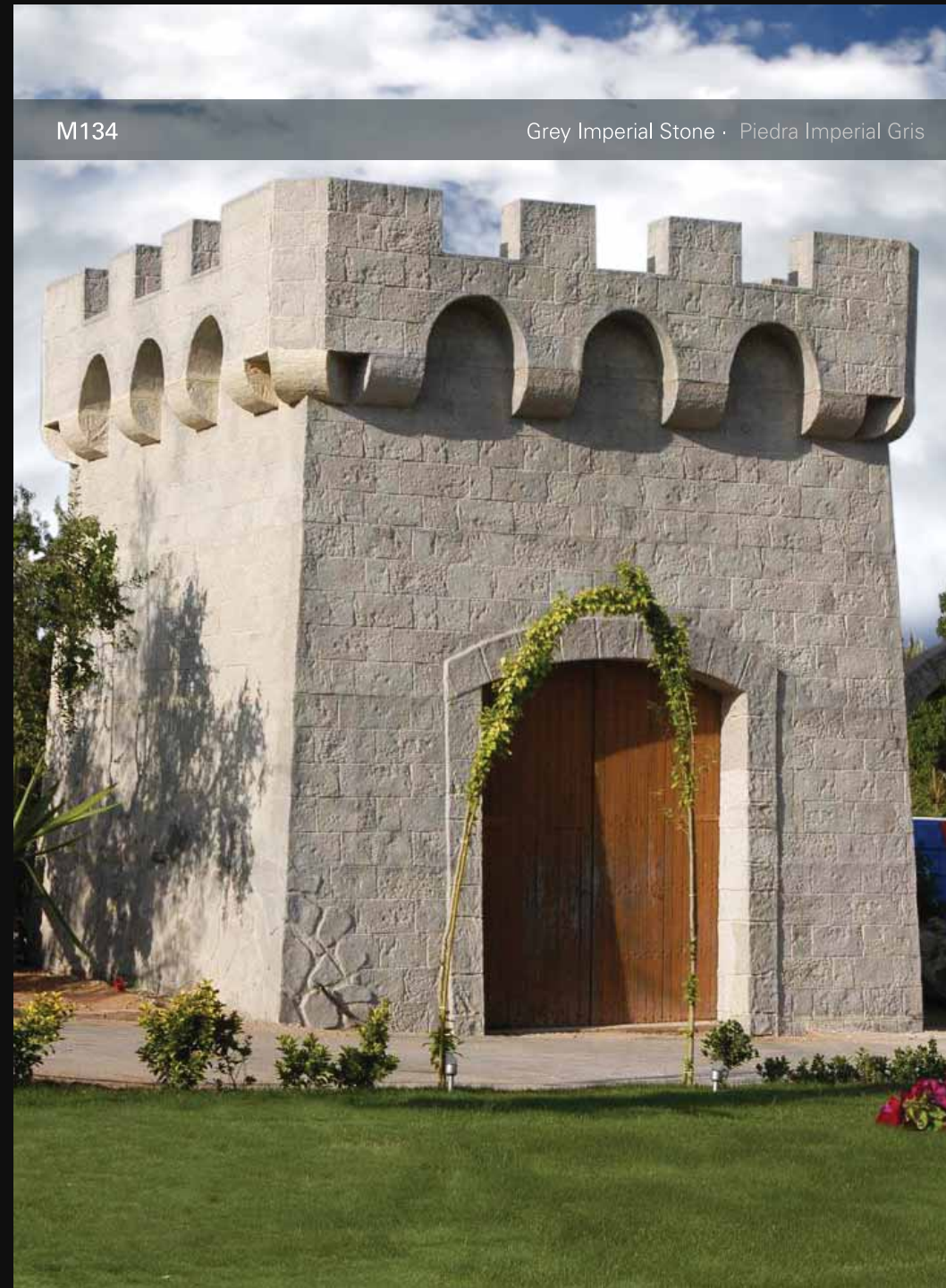
M063



M061 Grey Cut Stone Panel · Panel Piedra Tallada Gris

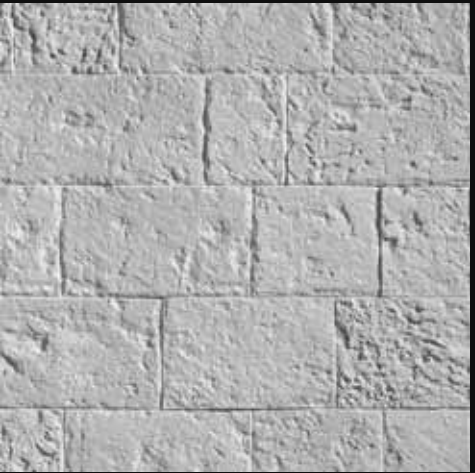


M063 Ochre Cut Stone Panel · Panel Piedra Tallada Ocre



M134

Grey Imperial Stone · Piedra Imperial Gris

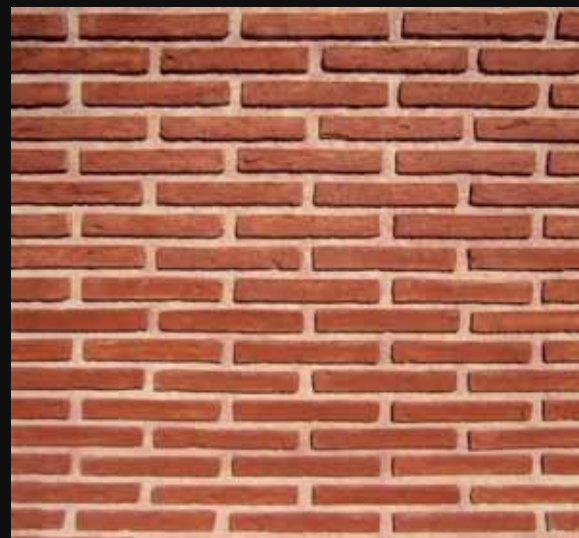


M134 Grey Imperial Stone Panel · Panel Piedra Imperial Gris

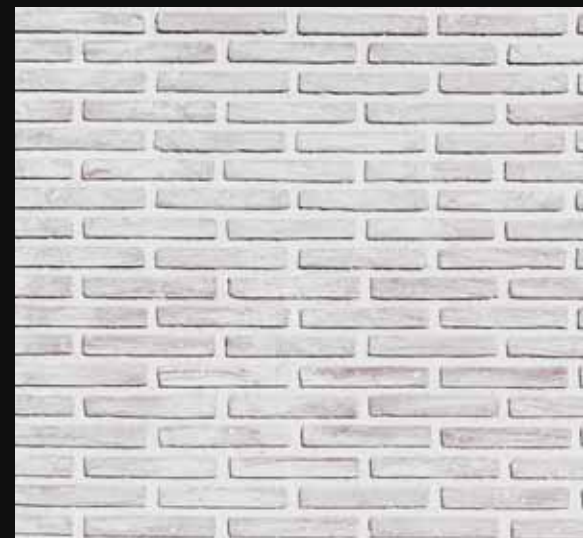


M136 Ochre Imperial Stone Panel · Panel Piedra Imperial Ocre

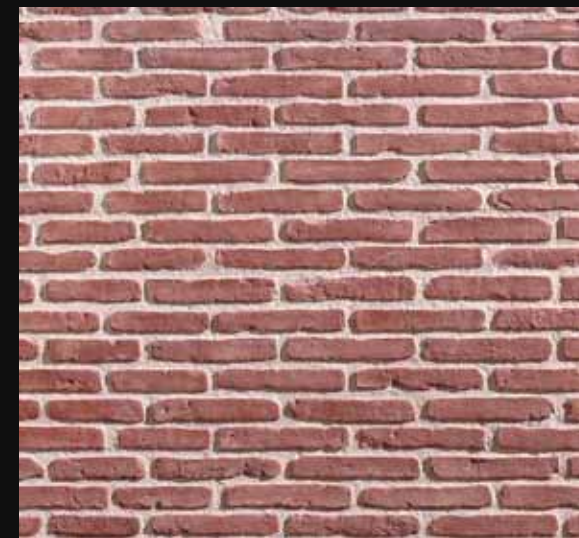
PANELS | PANELES



M-002 • Old Brick Panel | Panel Ladrillo Viejo



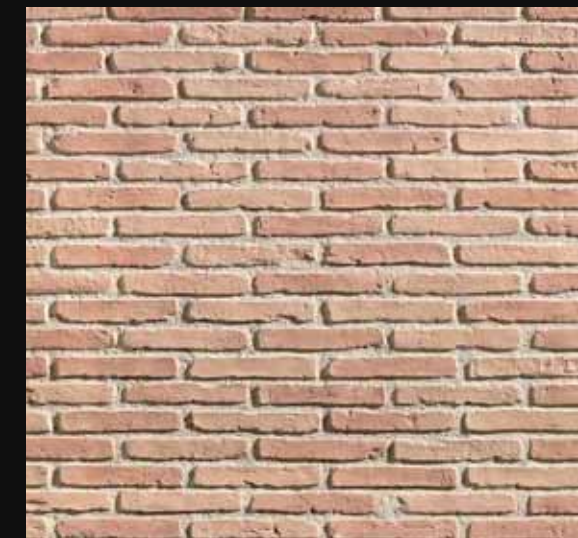
M-003 • Scrub White Old Brick Panel | Panel Ladrillo Viejo Blanco Restregado



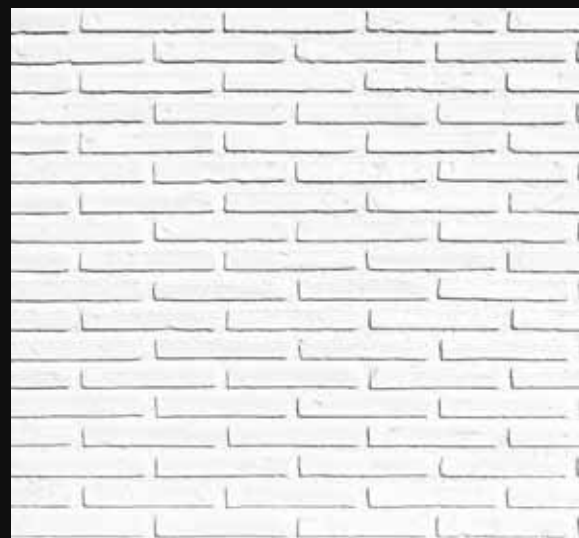
M-005 • Alhambra Brick Panel | Panel Ladrillo Alhambra



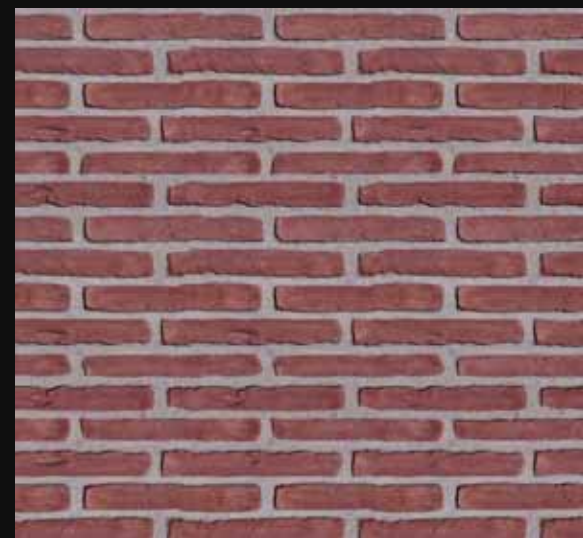
M-006 • Ochre Alhambra Brick Panel | Panel Ladrillo Alhambra Ocre



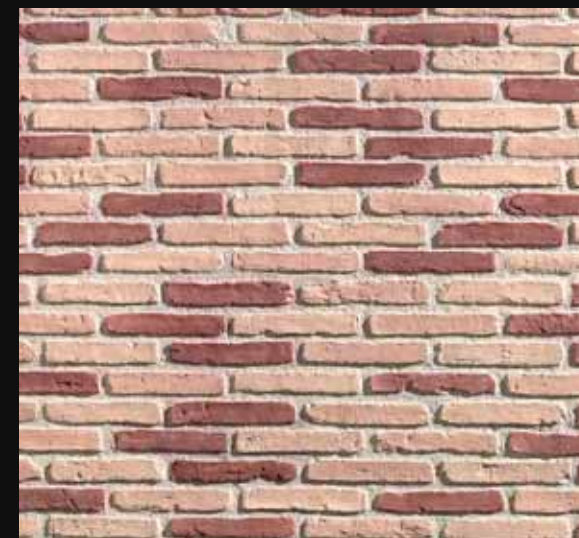
M-007 • Bi-colour Brick Panel | Panel Ladrillo Bicolor



M-271 • White Old Brick Panel | Panel Ladrillo Viejo Blanco



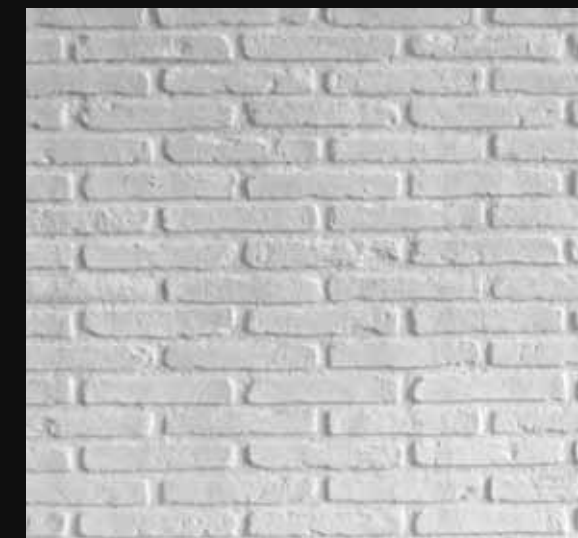
M-005.G • Alhambra Board Grey Brick Panel | Panel Ladrillo Alhambra Junta Gris



M-009 • Multi-colour Brick Panel | Panel Ladrillo Multicolor



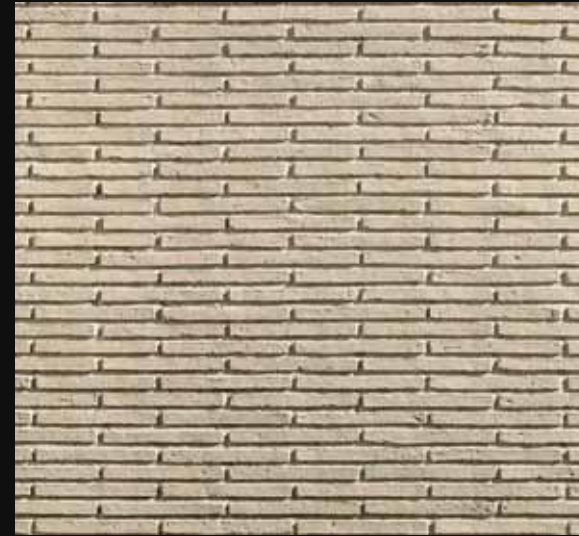
M-272 • Scrubbed White Brick Panel | Panel Ladrillo Blanco Restregado



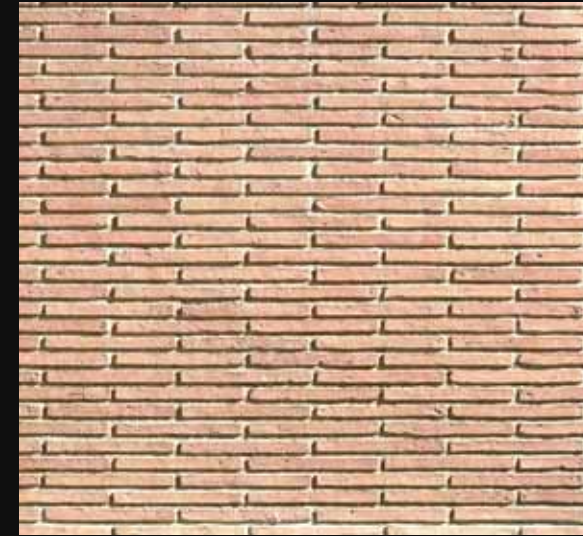
M-272.1 • White Alhambra Brick Panel | Panel Ladrillo Alhambra Blanco



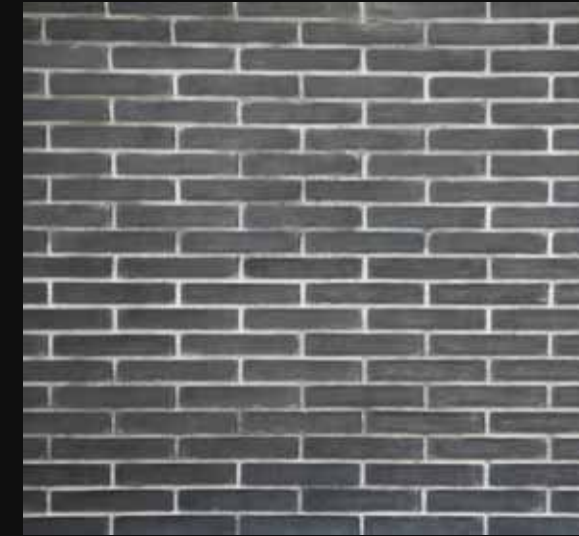
M-010 • Red Adobe Panel | Panel Adobe Rojo



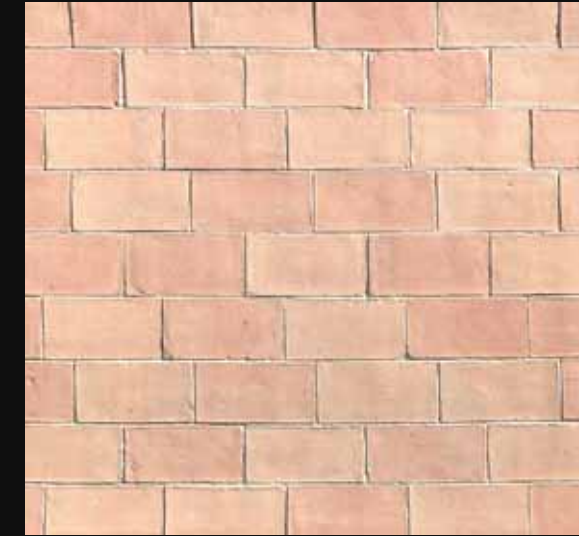
M-012 • Ochre Adobe Panel | Panel Adobe Ocre



M-013 • Bi-colour Adobe Panel | Panel Adobe Bicolor



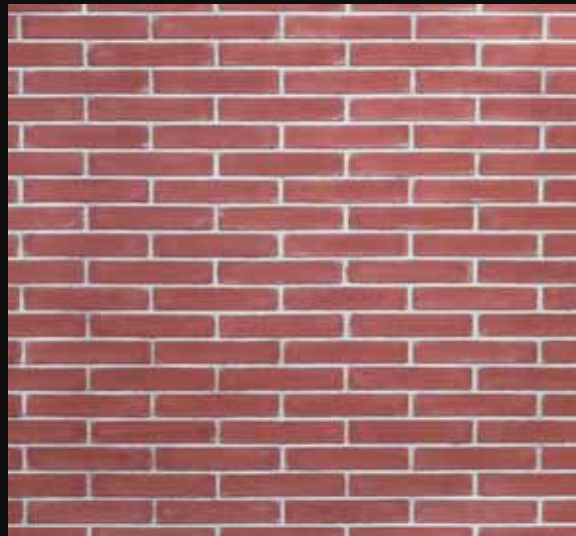
M-269 • London Brick Panel | Panel Ladrillo London



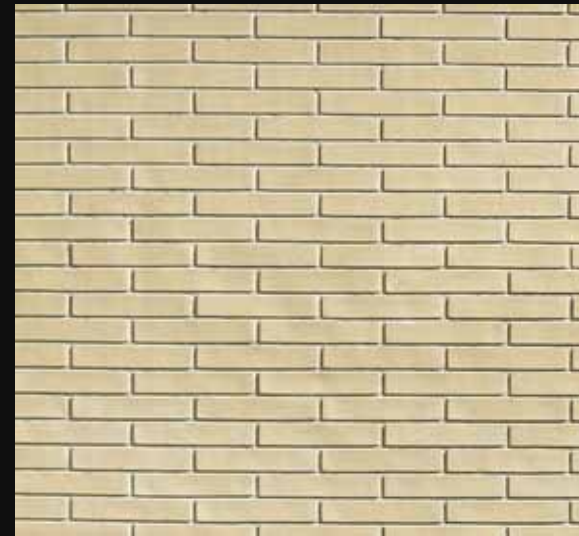
M-021 • Classic Rasilla Panel | Panel Rasilla Clásica



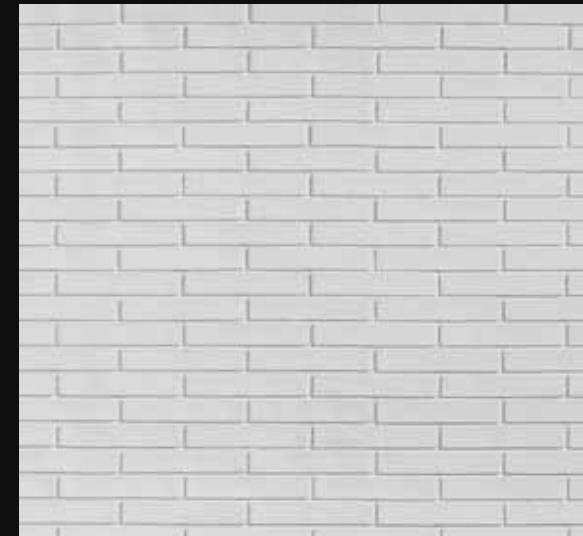
M-023 • Ochre Rasilla Panel | Panel Rasilla Ocre



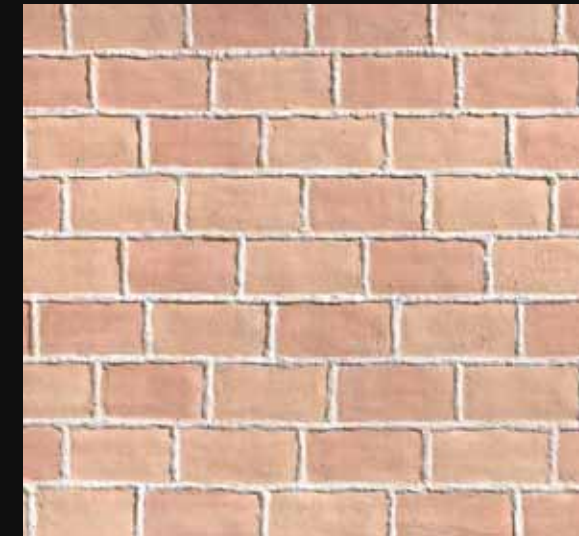
M-014 • Red New Brick Panel | Panel Ladrillo Nuevo Rojo



M-015 • Ochre New Brick Panel | Panel Ladrillo Nuevo Ocre



M-270 • White New Brick Panel | Panel Ladrillo Nuevo Blanco



M-024 • Contrarrasilla Panel | Panel Contrarrasilla



M-025 • Toscana Rasilla Panel | Panel Rasilla Toscana



M-038 • River Pebble Panel | Panel Piedra de río



M-030 • Brick and River Pebble Panel | Panel Ladrillo y Piedra de Río



M-034 • River Pebble and Brick Panel | Panel Piedra de Río y Ladrillo



M-040 • Opus Spicatum Panel | Panel Opus Spicatum



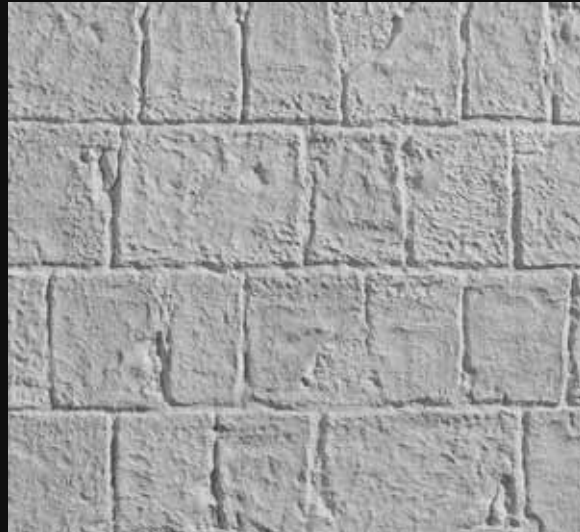
M-051 • Grey Dry Stone Panel | Panel Piedra Seca Gris



M-053 • Ochre Dry Stone Panel | Panel Piedra Seca Ocre



M-054 • Brown Dry Stone Panel | Panel Piedra Seca Marrón



M-061 • Grey Cut Stone Panel | Panel Piedra Tallada Gris



M-063 • Ochre Cut Stone Panel | Panel Piedra Tallada Ocre



M-110 • Miranda Stone Panel | Panel Piedra Miranda



M-055 • Blue Dry Stone Panel | Panel Piedra Seca Azul



M-056 • Swap Dry Stone Panel | Panel Piedra Seca Invertida



M-085 • Majorca Stone Panel | Panel Piedra Mallorquina



M-070 • Grey Ginestar Stone Panel | Panel Piedra Ginestar Gris



M-072 • Red Clay Ginestar Stone Panel | Panel Piedra Ginestar Rojo Arcilla



M-074 • Ochre Ginestar Stone Panel | Panel Piedra Ginestar Ocre



M-100 • Grey Kahala Stone Panel | Panel Piedra Kahala Gris



M-102 • Reddish Kahala Stone Panel | Panel Piedra Kahala Rojiza



M-088 • Dark Slate Panel | Panel Pizarra Oscura



M-076 • Special Ginestar Stone Panel | Panel Piedra Ginestar Especial



M-080 • Grey Large Stone Panel | Panel Piedras Grandes Gris



M-082 • Ochre Large Stone Panel | Panel Piedras Grandes Ocre



M-089 • Ochre Slate Panel | Panel Pizarra Ocre



M-091 • Grey Slate Panel | Panel Pizarra Gris



M-093 • Two-tone Slate Panel | Panel Pizarra Bitono



M-095 • Black Forge Slate Panel | Panel Pizarra Negra Forja



M-095.1 • Matte Black Slate Panel | Panel Pizarra Negra Mate



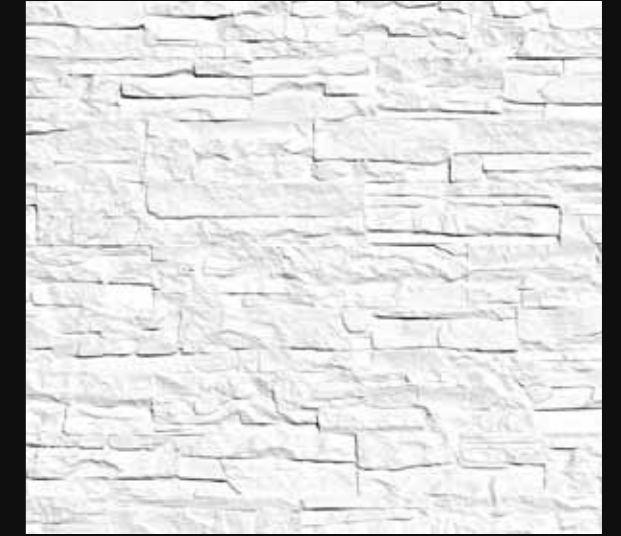
M-273 • White Slate Panel | Panel Pizarra Blanca



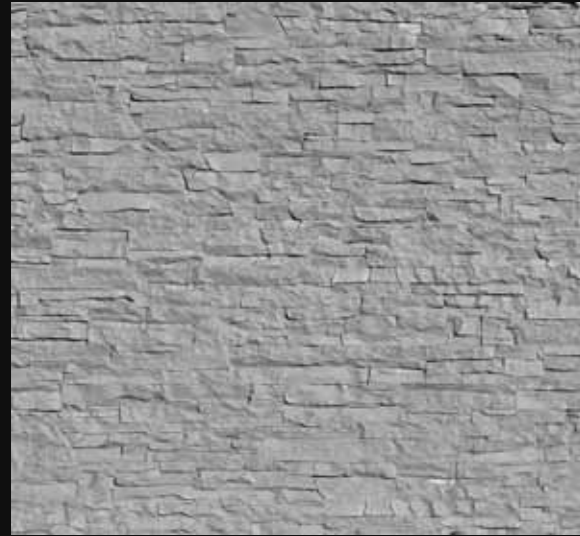
M-098 V • Clear Laja Stone Panel | Panel Piedra Laja Clara



M-099 • Ochre Laja Stone Panel | Panel Piedra Laja Ocre



M-235 • White Laja Stone Panel | Panel Piedra Laja Blanca



M-097 • Grey Laja Stone Panel | Panel Piedra Laja Gris



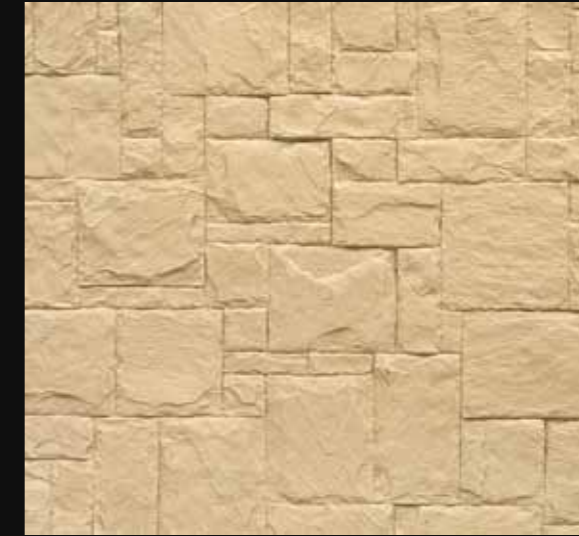
M-098 • Black Forge Laja Stone Panel | Panel Piedra Laja Negra Forja



M-098.1 • Matte Black Laja Stone Panel | Panel Piedra Laja Negra Mate



M-114 • Grey Limestone Panel | Panel Piedra Caliza Gris



M-115 • Ochre Limestone Panel | Panel Piedra Caliza Ocre



M-116 • Brown Limestone Stone Panel | Panel Piedra Caliza Marrón



M-117 • Clear Limestone Panel | Panel Piedra Caliza Clara



M-180 • Black Galician Slate Panel | Panel Pizarra Gallega Negra



M-240 • Grey Cobblestone Panel | Panel Adoquín Gris



M-134 • Grey Imperial Stone Panel | Panel Piedra Imperial Gris



M-136 • Ochre Imperial Stone Panel | Panel Piedra Imperial Ocre



M-142 • Sandstone Panel | Panel Arenisca



M-241 • Ochre Cobblestone Panel | Panel Adoquín Ocre



M-242 • White Cobblestone Panel | Panel Adoquín Blanco



M-243 • Black Cobblestone Panel | Panel Adoquín Negro



M-216 • Grey Ascona Stone Panel | Panel Piedra Ascona Gris



M-217 • Ochre Ascona Stone Panel | Panel Piedra Ascona Ocre

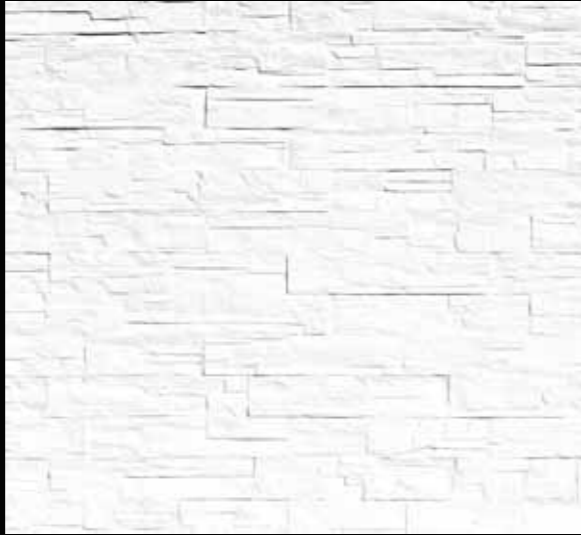


M-218 • Brown Ascona Stone Panel | Panel Piedra Ascona Marron

BOX OF SAMPLES | CAJA DE MUESTRAS



M-233 • Black Alpina Stone Panel | Panel Piedra Alpina Negra



M-234 • White Alpina Stone Panel | Panel Piedra Alpina Blanca



M-236 • Multicolor Alpina Stone Panel | Panel Piedra Alpina Multicolor




M-237 • Ochre Alpina Stone Panel | Panel Piedra Alpina Ocre



M-239 • Grey Alpina Stone Panel | Panel Piedra Alpina Gris



Weight | Peso 16,00 Kg / Box
 Volume | Volumen 0'06 m³



“...Architecture is the wise, correct and magnificent game of forms under the light” Le Corbusier

VAULTS | BÓVEDAS

We can radically change the ambience of a space by applying a vault structure.

A surprising and spectacular decorative solution.

Podemos cambiar radicalmente el ambiente de un espacio aplicando la estructura de bóveda. Una solución decorativa sorprendente y espectacular.

“... la arquitectura es el juego sabio, correcto y magnífico de los volúmenes bajo la luz”

Le Corbusier



Alhambra Brick Panel · Panel Ladrillo Alhambra

M005



M007

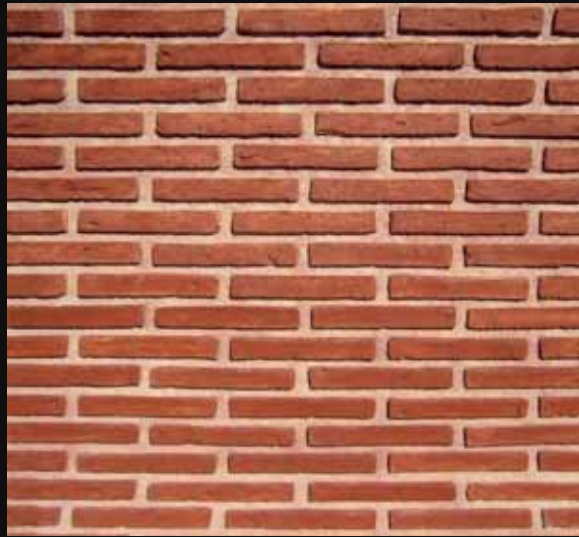
Bi-colour Brick Panel · Panel Ladrillo Bicolor



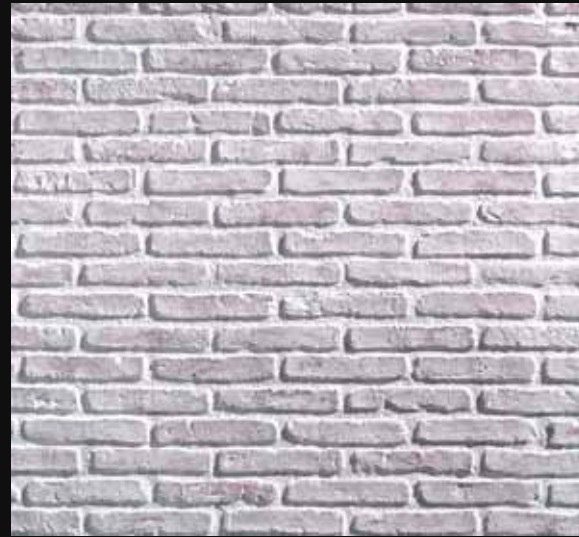
M021

Classic Rasilla Panel · Panel Rasilla Clásica

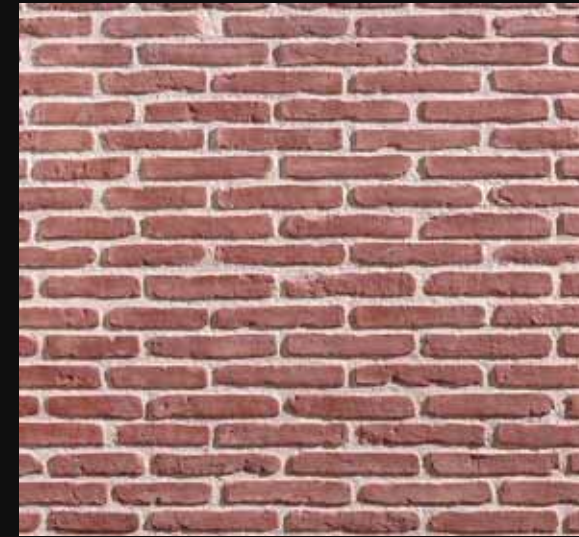
VAULTS | BÓVEDAS



M-002 • Old Brick Panel | Panel Ladrillo Viejo



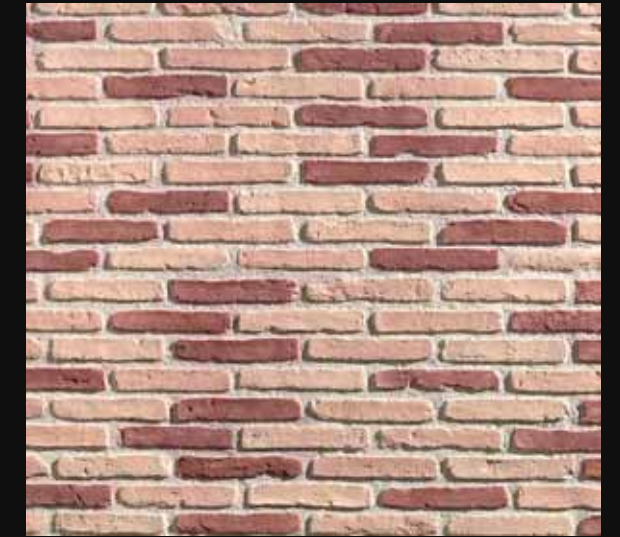
M-272 • Scrubbed White Brick Panel | Panel Ladrillo Blanco Restregado



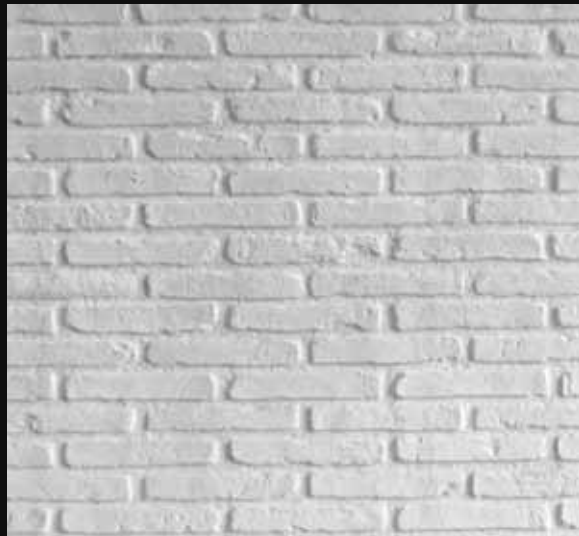
M-005 • Alhambra Brick Panel | Panel Ladrillo Alhambra



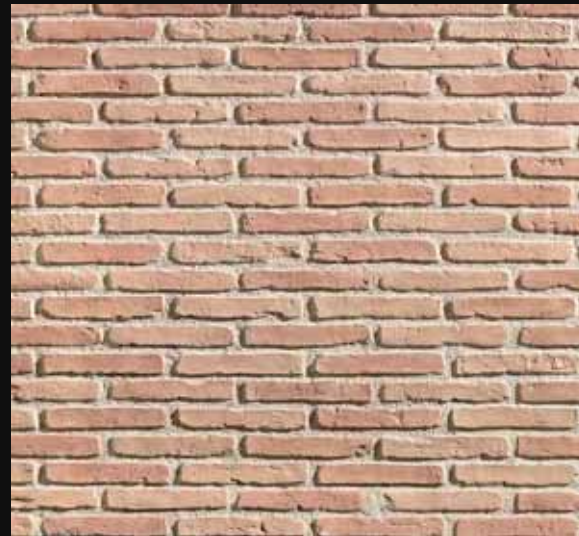
M-006 • Ochre Alhambra Brick Panel | Panel Ladrillo Alhambra Ocre



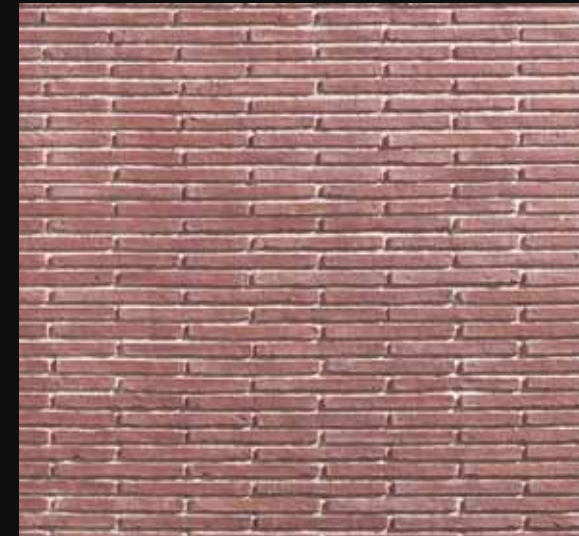
M-009 • Multi-colour Brick Panel | Panel Ladrillo Multicolor



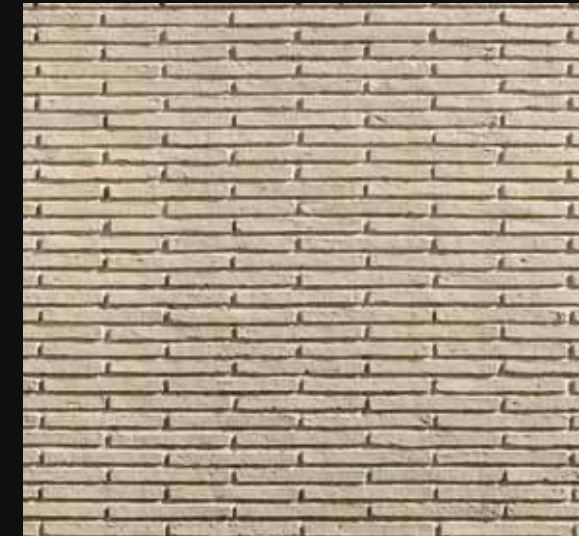
M-271 • White Old Brick Panel | Panel Ladrillo Viejo Blanco



M-007 • Bi-colour Brick Panel | Panel Ladrillo Bicolor



M-010 • Red Adobe Panel | Panel Adobe Rojo



M-012 • Ochre Adobe Panel | Panel Adobe Ocre



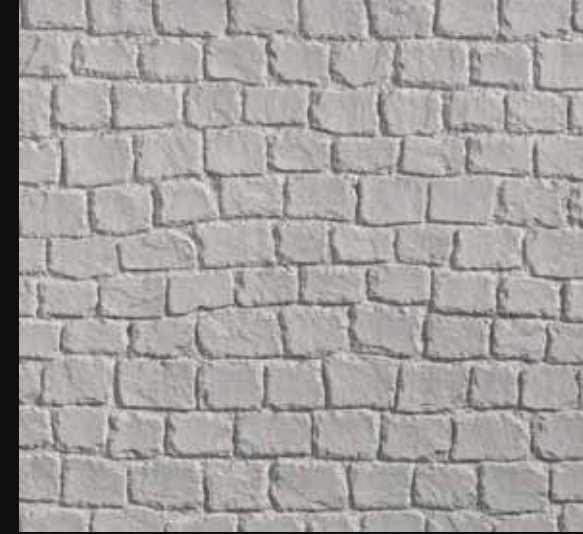
M-051 • Grey Dry Stone Panel | Panel Piedra Seca Gris



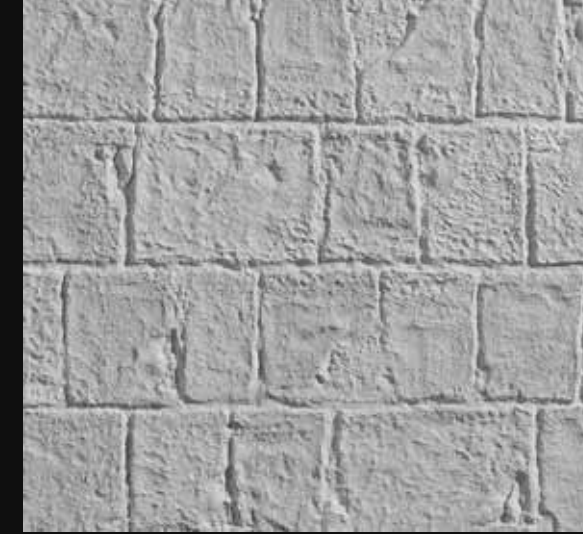
M-053 • Ochre Dry Stone Panel | Panel Piedra Seca Ocre



M-054 • Brown Dry Stone Panel | Panel Piedra Seca Marrón



M-240 • Grey Cobblestone Panel | Panel Adoquín Gris



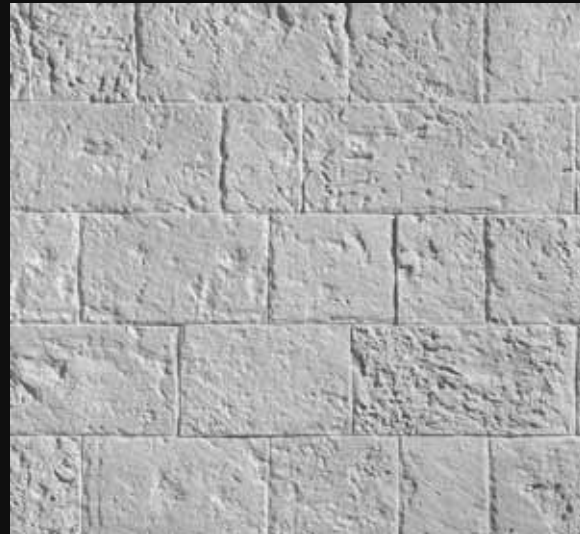
M-061 • Grey Cut Stone Panel | Panel Piedra Tallada Gris



M-063 • Ochre Cut Stone Panel | Panel Piedra Tallada Ocre



M-142 • Sandstone Panel | Panel Arenisca



M-134 • Grey Imperial Stone Panel | Panel Piedra Imperial Gris



M-136 • Ochre Imperial Stone Panel | Panel Piedra Imperial Ocre



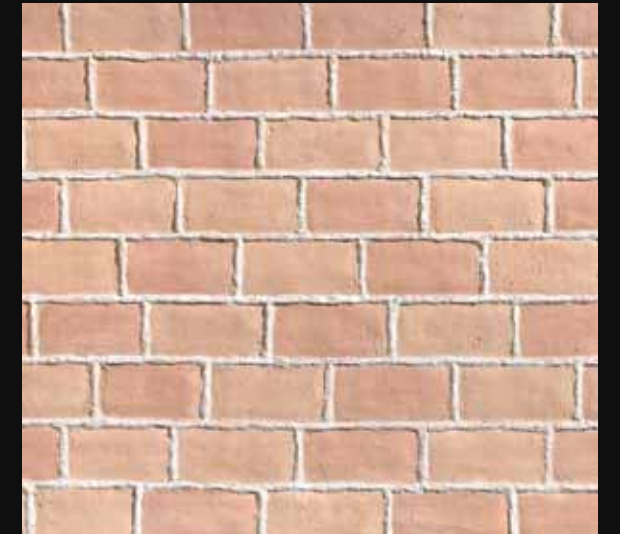
M-241 • Ochre Cobblestone Panel | Panel Adoquín Ocre



M-021 • Classic Rasilla Panel | Panel Rasilla Clásica



M-023 • Ochre Rasilla Panel | Panel Rasilla Ocre



M-024 • Contrarrasilla Panel | Panel Contrarrasilla

"Give me a place to stand and I will raise the world" Archimedes

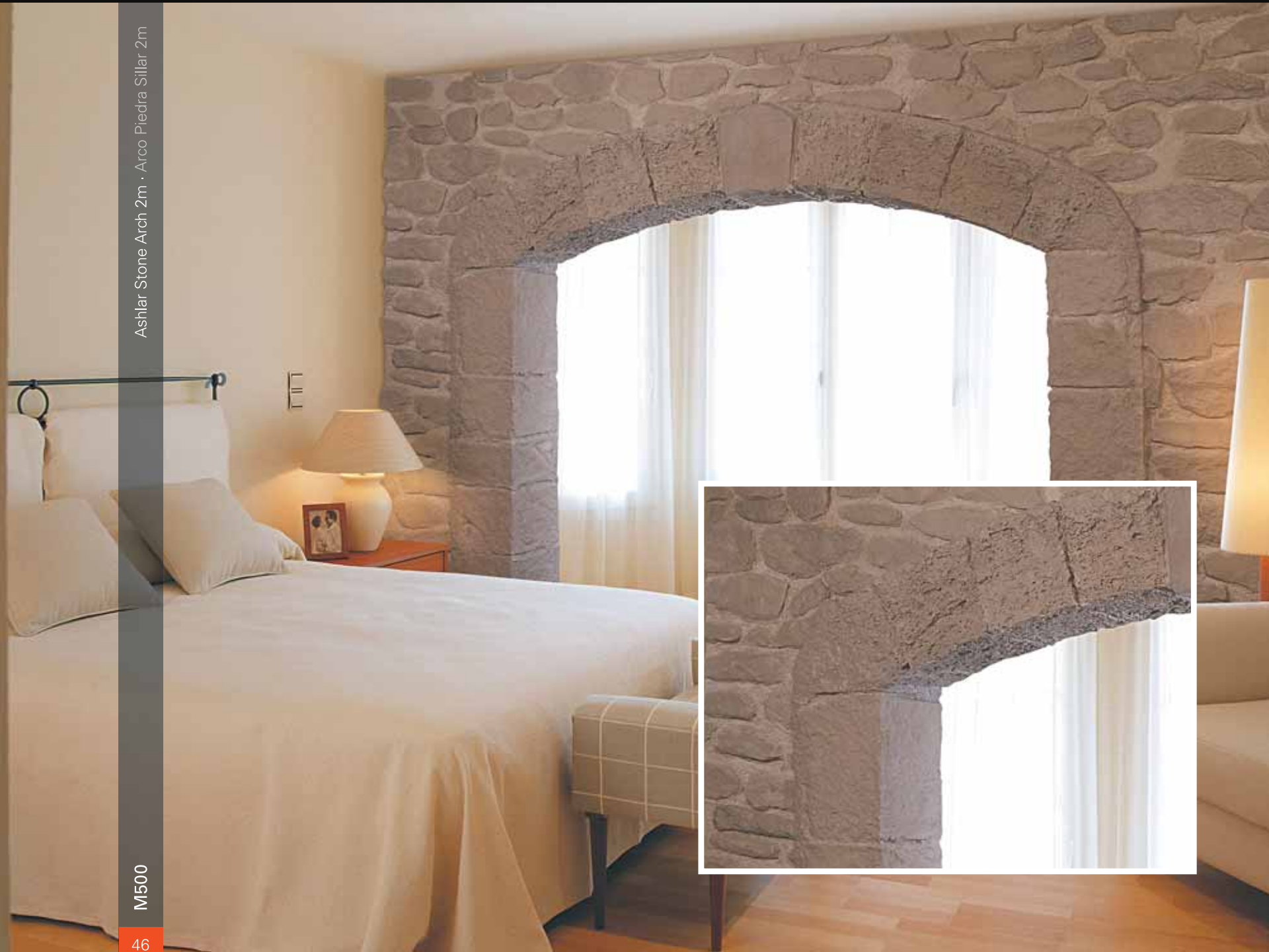
TOTALStone®

ARCHES | ARCOS

Smooth curves in multiple forms and textures to separate ambiances, to amplify or to endow a space with personality.

Suaves curvas de múltiples formas y texturas para separar ambientes, dar amplitud o dotar de personalidad a una estancia.

"Dadme un punto de apoyo y levantaré el mundo" Arquímedes



ARCHES | ARCOS



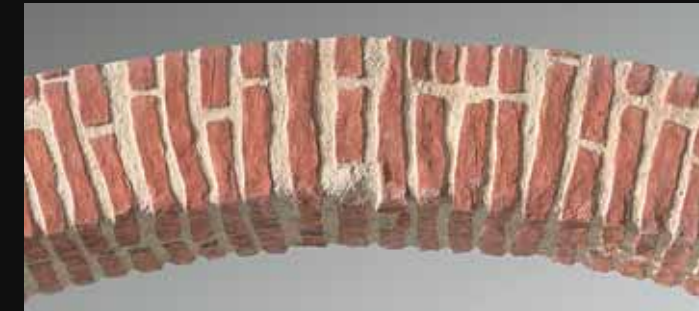
M410

Old Brick Arch 2m · Arco Ladrillo Viejo 2m



M500

Ashlar Stone Arch 2m · Arco Piedra Sillar 2m · 1,88 m²



M-400 · Old Brick Arch 1m | Arco Ladrillo Viejo 1m · 0,94 m · M-410 2m · 1,88 m²



M-420 · Alhambra Brick Arch 2m | Arco Ladrillo Alhambra 2m · 1,88 m²



M-421 · Ochre Alhambra Brick Arch 2m | Arco Ladrillo Alhambra Ocre 2m · 1,88 m²



M-500 · Ashlar Stone Arch 2m | Arco Piedra Sillar 2m · 1,88 m²



M-425 · Bi-colour Alhambra Brick Arch 2m | Arco Ladrillo Alhambra Bicolor 2m · 1,88 m²



M-502 · Ochre Ashlar Stone Arch 2m | Arco Piedra Sillar Ocre 2m · 1,88 m²

“Beauty is an agreement between content and form” Hanrik Ibsen



TOTALStone®

ANGLES & PILLARS | ÁNGULOS Y PILARES

Angles and pillars turn into harmonious and vertical supports.

Ángulos y pilares se convierten en soportes verticales sólidos y armónicos.

“La belleza es un acuerdo entre el contenido y la forma” Hanrik Ibsen



Grey Cut Stone Angle · Angulo Piedra Tallada Gris 30x30

M330



M320

Alhambra Brick Angle · Angulo Ladrillo Alhambra 40 x 40



M315

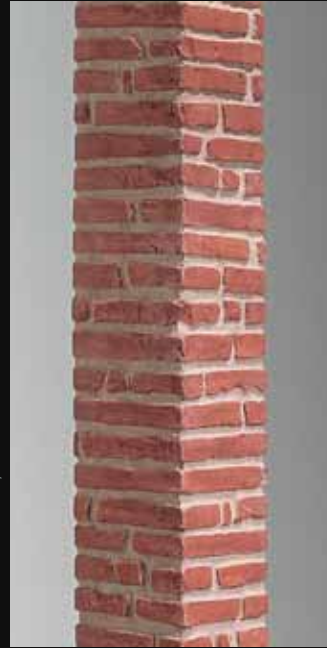
Bi-colour Alhambra Brick Angle · Angulo Ladrillo Alhambra Bicolor 30 x 30

CORNERS & PILLARS ÁNGULOS Y PILARES

M-300 · Old Brick Angle | Ángulo Ladrillo Viejo · 30 x 30 · 1,71 m²



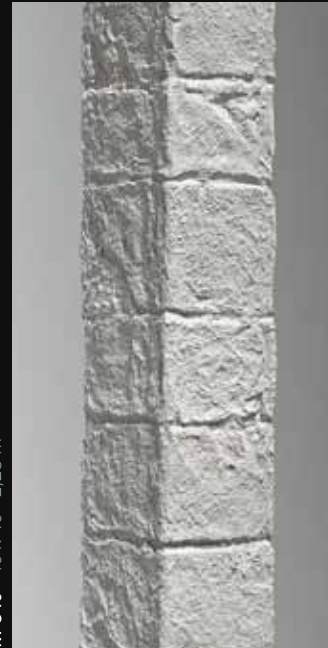
M-310 · Alhambra Brick Angle | Ángulo Ladrillo Alhambra · 30 x 30 · 1,71 m²
M-320 · 40 x 40 · 2,28 m²



M-315 · Bi-colour Alhambra Brick Angle | Ángulo Ladrillo Alhambra Bicolor · 30 x 30 · 1,71 m²
M-324 · 40 x 40 · 2,28 m²



M-330 · Grey Cut Stone Angle | Ángulo Piedra Tallada Gris · 30 x 30 · 1,71 m²
M-340 · 40 x 40 · 2,28 m²



M-335 · Ochre Cut Stone Angle | Ángulo Piedra Tallada Ocre · 30 x 30 · 1,71 m²
M-341 · 40 x 40 · 2,28 m²



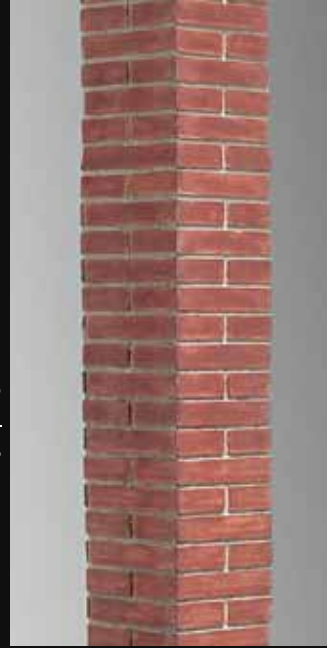
M-302 · Ochre Old Brick Angle | Ángulo Ladrillo Viejo Ocre · 30 x 30 · 1,71 m²



M-312 · Ochre Alhambra Brick Angle | Ángulo Ladrillo Alhambra Ocre · 30 x 30 · 1,71 m²
M-321 · 40 x 40 · 2,28 m²



M-350 · New Brick Angle | Ángulo Ladrillo Nuevo · 30 x 30 · 1,71 m²



M-360 · Column | Columna · 30 x 30 x 30 cm · 2,57 m² · Coming soon | Próximamente



CHARACTERISTICS & TECHNICAL DATA | CARACTERÍSTICAS Y DATOS TÉCNICOS

Although we could find hundreds of features to define our products, we could summaries the most outstanding ones as follows:

Aunque encontraríamos cientos de adjetivos para definir nuestros productos, resumimos los más destacados:

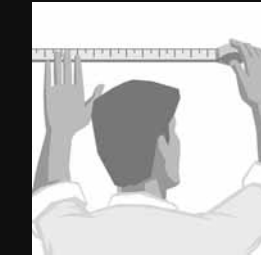
- LIGHTWEIGHT | LIGEROS weight 6 kg/m² | Un peso aproximado de 6 kg/m²
- LOW THICKNESS | FINOS average of 2-4 mm | Grosor medio de 2-4 mm
- SOLIDITY | SÓLIDOS as much as stratified products | Tanto como los estratificados
- PROTECTION | PROTECTORES waterproof and insulating | Impermeables y aislantes
- DURABILITY | PERDURABLES not affected neither by the erosion of elements nor by ultraviolet rays | No les afecta la erosión de los elementos ni los rayos ultravioleta
- UNALTERABILITY | INALTERABLES low contraction and minium expansion | Baja contracción y mínima dilatación
- ADAPTABILITY | ADAPTABLES easy to fix in any surface | Se fijan sobre cualquier superficie
- CONVENIENCE | CÓMODOS do not need maintenance or cleaning | No requieren mantenimiento ni limpieza
- MULTIFUNCTIONAL | MULTIFUNCIONALES could be used as cement shuttering | Sirven como encofrado de hormigón
- PRACTICAL | PRÁCTICOS easy and quick installation, do not require permission for construction | Se instalan fácil y rápidamente, sin permiso de obras
- FREESTANDING | AUTÓNOMOS do not need structures | No precisan estructuras
- PERFECTION | PERFECTOS visually perfect appearance | Su apariencia es visualmente perfecta
- NATURAL | NATURALES Produced with natural lands. Varying shades of colors | Producidos con tierras naturales. Tonalidades cromáticas variables
- VERSÁTIL | VERSATILE It is an ideal material for exterior and interior | Es un material ideal para exteriores e interiores

INSTALLATION | INSTALACIÓN



Purchase the panels for the complete area to be covered.

Adquirir los paneles necesarios para el área total a revestir.



Measure the surface where the installation will be made and count the panels to cut.

Medir la superficie sobre la que se realizará la instalación y calcular las piezas a cortar.



Cut the panels on the back with a fretsaw with an special blade fiber/polyester or a radial saw with a diamond disk.

Cortar los paneles con una caladora con hoja de sierra para fibra/poliéster, o con una radial con disco de diamante.



Put the panel on the surface and drill (only in joints between bricks, never in bricks) with a 6mm bit.

Sobreponer el panel a la superficie y taladrar (sólo en juntas, no en ladrillos) con una broca de 6mm.



Fix the panels using screws with incorporated plugs. Each panel needs around 15 to 20 screws.

Fijar el panel utilizando preferiblemente tornillos con taco incorporado, con un golpe seco. Cada panel precisa de 15 a 20 tornillos.



Prepare the power putty adding 25% of the weight in water (1 kgr. of powder – 0,25 lbs. of water). Mix the ingredients

Preparar la Masilla añadiendo un 25% de su peso en agua. Remover la mezcla (1 kg. de masilla – 0,25 lbs. de agua)



Putty Knife is the best tool to cover the joints and hide the screw heads with Mastic mixture.

La espátula de laurel es la herramienta ideal para rellenar las juntas y camuflar las cabezas de los tornillos con el Mastic.



Texture the Mastic with slight touches, **not brush-strokes**. Use a brush Texturizing brush that must be cleaned to remove the excess of Mastic.

Texturizar el Mastic con pequeños toques, no con pinceladas. Usar una paletina plana que se debe limpiar a medida que se vaya impregnando de Mastic.



Once the Mastic is dried, paint with the Mastic colour, draining the brush in a rag to avoid dropping.

Cuando el Mastic esté seco pintar con el color Mastic descargando el pincel en un trapo para evitar posibles goteos.



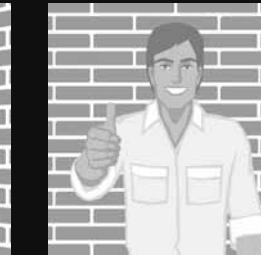
Paint the bricks and joints with the proper colours, according to each panel.

Pintar ladrillos y juntas con el color correspondiente, que variará en función del tipo de panel.



With the aim of integrating the colours perfectly, rub the surface lightly with a rag.

Con el objetivo de integrar al máximo los colores, matizar con un trapo el resultado frotando suavemente la superficie.



The wall is finished. The result is perfect!

La pared está terminada. ¡El resultado es impecable!

QUOTE | PRESUPUESTAR

To calculate the number of panels required
Measure the area to cover, calculate m², then m² divided by 3,70 gives us the total number of panels.

M² / 3,70 = number of panels

Para calcular el numero de paneles necesarios
Medir la superficie a cubrir, calcular los m², entonces los m² divididos entre 3,70 nos da el numero total de paneles.

M² / 3,70 = nº de paneles

Calculation accelerator (only for Mastic)
5 kgs. 0,10 liters of Mastic, accelerator.
To 20 kgs. 0,40 liters of Mastic, accelerator.

Calculation of color
Color junta 1 color para 6 panels.
Color stone / brick 1 to 4 color panels.

Calculo del acelerador (solo para Mastic)
Para 5 kgs. de Mastic 0,10 lts. de acelerador.
Para 20 kgs. de Mastic 0,40 lts. de acelerador.

Calculo de colores
Color junta 1 color para 6 paneles.
Color piedra/ladrillo 1 color para 4 paneles.

Number of screws
6 to 8 screws per m² (note the type of anchor as the medium).

Calculation of Mastic or caulk
Pound per m².

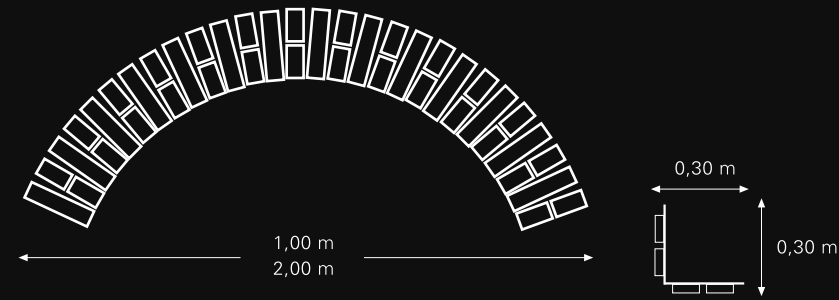
Cantidad de tornillos
De 6 a 8 tornillos por m² (observar el tipo de anclaje según el soporte).

Calculo del Mastic o masilla
Medio kilo por m².



reserves the right to modify the contents of this catalogue without prior notice.
se reserva el derecho de modificar los contenidos de este catálogo sin previo aviso.

ARCHES | ARCOS

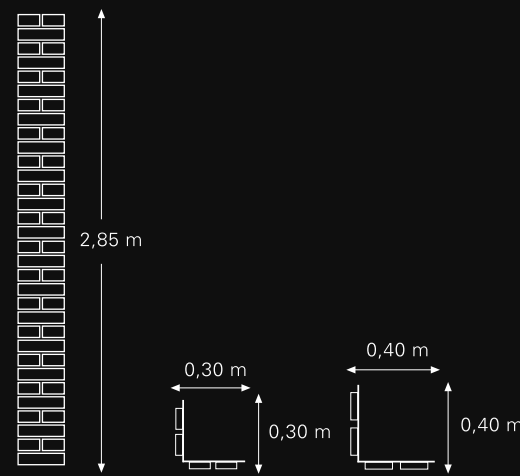


External measures | Medidas exteriores

Size | Tamaño
 1,00 x (0,30 x 0,30) m - 2,00 x (0,30 x 0,30) m
 3' 2/7" x (62/63" x 62/63") - 6' 5/9" x (62/63" x 62/63")

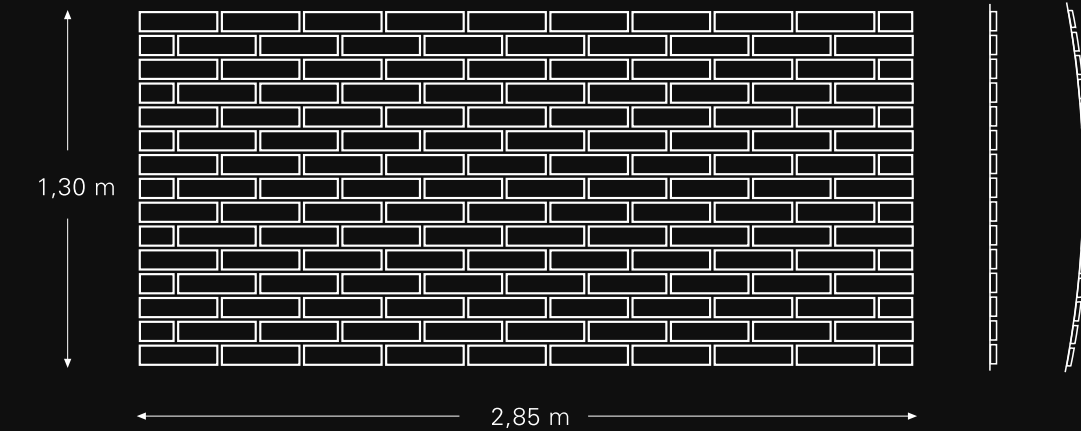
Surface area | Superficie
 0,94 m² - 1,88 m² - 2,82 m²
 10,12 sq.ft - 20,24 sq.ft

CORNERS & PILLARS | ÁNGULOS Y PILARES



Size | Tamaño
 2,85 x (0,30 x 0,30) m - 2,85 x (0,40 x 0,40) m
 9' 1/3" x (62/63" x 62/63") - 9' 1/3" x (1' 5/16" x 1' 5/16")

PANELS & VAULTS | PANELES Y BÓVEDAS



Size | Tamaño Surface area | Superficie
 2,85m | 9' 1/3" 3,70 m² | 39,83 sq.ft.
 1,30m | 4' 1/4"

Approximate measurements | Medidas aproximadas

TECHNICAL CHARACTERISTICS | CARACTERÍSTICAS TÉCNICAS

POLYESTER REINFORCED WITH FIBERGLASS | POLIESTER REFORZADO CON FIBRA DE VIDRIO (PRFV)

Mechanical Characteristics / Características Mecánicas	Control Method / Método de Control	Unit / Unidad	P.R.F.V
Weight / Peso		Kg/ m ²	6
Breaking strength / Resistencia a la Rotura	DIN EN ISO 527-1	Mpa	58
Breaking length / Alargamiento de Rotura	DIN EN ISO 527-1	%	1,5 a 3
Modulus of elasticity / Módulo de Elásticidad	DIN EN ISO 527-1	N/mm ²	1,20 a 4,50 Gpa
3,5% elongation strength / Resistencia 3,5% de Elongación	DIN EN ISO 178	%	2 a 5 %
Impact resistance without breakage / Resistencia al Impacto sin rotura	ISO 179-2	J/m ²	30854
Barcol hardness / Dureza Barcol	UNE 53270	°C	36 a 44 °C
Bending strength / Resistencia a la Flexión	DIN EN ISO 178	Mpa	26,30
Modulus of bending / Módulo de Flexión	DIN EN ISO 178	Mpa	1320
Tensile Strength / Resistencia a la Tracción		Kg/mm ²	15 a 70

Thermal Characteristics / Características Térmicas	Control Method / Método de Control	Unit / Unidad	P.R.F.V
Thermal insulation coefficient / Coeficiente Aislamiento Térmico		K	K-5 a K-6
Caloric conduction / Conductividad calorífica		°C / 1cm / 1m ² / 1h	0,1 a 0,2
Heat conduction / Conductividad térmica	UNE 53037-76	Kcal/mH°C	0,2 a 0,3
Thermal expansion / Dilatación térmica	ASTM E-E831	°C	240-10 °C
Frost Resistance / Resistencia a la Helacidad	UNE 67028	°C	25 cycles. No defects were detected in the tested items. 25 ciclos de -15 °C a +15 °C No se han observado ningún defecto.

Other Properties / Otras Propiedades	Control Method / Método de Control	Unit / Unidad	P.R.F.V
Reaction to fire / Reacción al fuego	UNE EN 13501-1:2002	Opción A Opción B	Euroclase Bs3d0 Euroclase Ds3d0
Water absorption / Absorción al agua	DIN EN ISO 62-3	%	0,967%
Range of temperature application / Rango Aplicación de temperatura	Clasificación	°C	-65 +180
Dimensional Changes / Variaciones Dimensionales	Exposed to + 60 °C in oven and to -20°C in refrigerator / Exposición de +60 °C en estufa a -20°C en frigorífico	°C	No significant dimensional changes were detected in any of the tested items / No se han observado variaciones dimensionales significativas en ninguna pieza ensayada.

NEW EDITIONS | NUEVAS EDICIONES





Head Office & Showroom:
Paseo de la Riera 137-141
MILEStone Bld.
08329 TEIA - Barcelona
Spain
N 41° 30.102'
E 02° 19.117'
info@totalstone.com
www.totalstone.com

Phone: +34 93 247 88 70
Fax: +34 93 265 45 54
V. Conference: +34 93 247 90 17

Factory:
Polig. Industrial Aubals, parcelas 40-68
43770 MÓRA LA NOVA - Tarragona
Spain
N 41° 6' 22.5612''
E 0° 38' 55.071''
info@totalpanelsystem.com
www.totalpanelsystem.com



Made in Spain

patented product

